



UNISEC

making the difference!

Alternative solvents series

Dry cleaning & Laundry solutions

UNISEC

Dry cleaning & Laundry solutions

making the difference!



Alternative solvents series



Series
HCM
(with distillation)

Company Profile

UNISEC was founded in Barcelona in 1984 as a company serving dry cleaning professionals. After decades of experience in the sector, we have specialized in the design and manufacture of dry cleaning machines for processes with different types of solvents.



Capacity & Experience

Thanks to the extensive knowledge acquired during these more than 30 years, **UNISEC** is characterized by its high technical and industrial capacity.

In 1993, the company established its first production plant. Some years later, and faced with the growing need for production, the plant moved to Beijing, China, where it currently has an area of more than 8,000 m², with significant growth prospects in the coming years.

Our business policy is based on innovation and the development of new products. This has led us to be leaders in some of the most important markets of the world.

One of our best assets is our human team, made up of more than 80 professionals committed to the constant improvement of the highest quality standards according to the different current regulations of the sector and focused on the objectives that our customers demand.

Our industrial capacity currently allows us to fully manufacture all components of the **UNISEC** machinery in our own facilities.

Agreements with the main and most important manufacturer brands of electrical, electronic, hydraulic and mechanical components, etc ... gives an added value to our products in addition it guarantees the quality and good functioning of the machinery produced by **UNISEC**.

Quality & After-sales service

With engineering, components and quality at the highest level of demand from European countries and the United States, **UNISEC** has experienced a huge expansion internationally.

Our best reward is the satisfaction of our customers and partners, thanks to whom we can say that we are already present in more than fifty countries around the world.

In **UNISEC** we give great importance to the after-sales service and the supply of spare parts.

Our technicians are prepared to provide support during the entire assembly and start-up phase of the equipment, in addition to continuous support on maintenance to optimize the total life cycle of our products as well as their best performance and productivity .

Our spare parts policy is to maintain high stocks of components, together with international brands, all supported by an agile distribution center, which makes our customers feel our proximity.

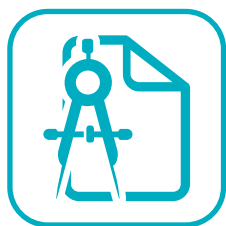
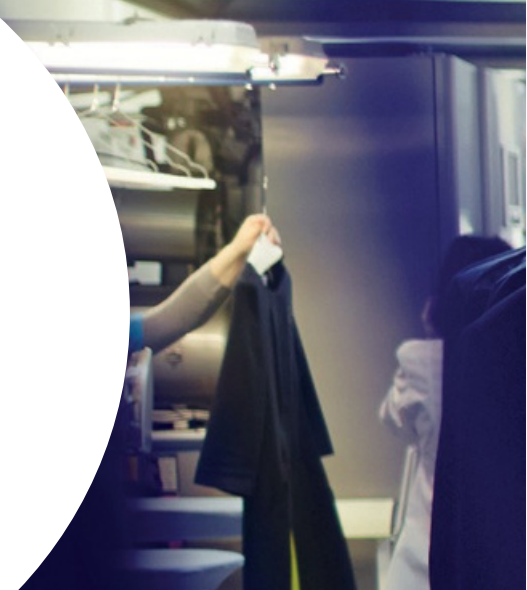




Key Manufacturing Factors

All our products are the result of constant research and innovation on our key manufacturing factors.

At UNISEC we project our machines always thinking of the maximum benefit for our customers.



Design

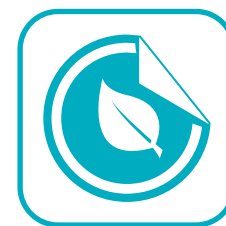
With UNISEC you will find a machine that adapts perfectly to your space and your work system. All the details are projected bearing in mind the needs of our customers.



Durability

Our machines are built entirely in **STAINLESS STEEL** which extends its lifetime.

The technical features of **UNISEC** machines facilitate its use and maintenance by the professional.



Environment

UNISEC machines are manufactured to care for and protect everything that surrounds us

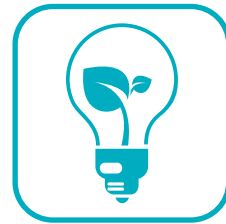
Taking care of the environment and the work place has always been one of our main objectives.



Security & Confort

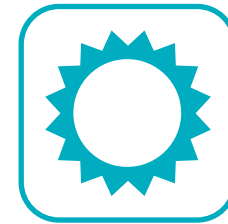
Our machines are built according to the strictest safety regulations.

The quality of the components of the **UNISEC** machines guarantee the ease of use, its good functioning and the safety of the professional in charge of the processes.



Energy efficiency

With the **UNISEC** dry cleaning machines you will obtain significant energy, water and solvent savings by optimizing your washing processes.



Cleaning results

The main objective of our customers is to obtain the best cleaning results.

Our machines are designed so that they become the most useful tool for the professional and the key to success for his business.

UNISEC

Equipment and system JUNIOR HCM

JUNIOR HCM models perform the vacuum distillation process and can be used with any type of alternative solvent.

Thanks to its continuous vacuum distillation system HCM models are ideal for those professionals who process all kinds of textile articles, leather, workwear, carpets, etc...



Stainless steel

The UNISEC machines are characterized by their durability and robustness and consequently their long service life.

All the parts in contact with the solvent to its vapors have been manufactured in stainless steel, including the tanks of solvent, drying circuit, still, filters, water separator, decanter, solvent pipes, drum ...).

Thanks to this feature we avoid corrosion problems.



Design



Durability



UNISTILL

The UNISTILL system is controlled from the PLC of the machine which facilitates its use and operation.

UNISEC stills incorporate a vacuum system to reduce the boiling temperature of the alternative solvents and facilitate their distillation.

They are built in Stainless Steel and covered with a thermal insulation that minimizes heat loss thus reducing energy consumption.

It also includes an automatic still cleaning system which keeps the still walls clean by adding a pump that extracts all the waste to an external tank, keeping the machine in optimum cleaning conditions for its proper functioning.



Environment



Security & Comfort



Energy efficiency

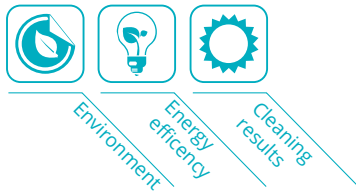




UNI DRY UNIDRY

With the UNIDRY system, you will be able to reduce your energy costs and increase your economic benefits, as well as optimizing drying times.

- Designed without dead angles generating a greater flow of air.
- It incorporates two filters with large filtering surface avoiding obstruction of the drying circuit due to lint, as well as bad odors inside.
- It incorporates a system that controls the speed of the air flow during the drying process thus optimizing the time and improving the performance of the machine depending on the type of solvent used.



UNI SAFE UNISAFE

Redundant security systems guarantee security in the event of any eventuality.



JUNIOR HCM

Excellent cleaning results.
Versatile, safe, efficient and intelligent are some of
the features that describe the JUNIOR HCM series of
drycleaning machines.



JUNIOR HCM models are designed to be used
with any type of alternative solvent. These
models are ideal for the professional who offers
cleaning services for different market segments.

Its vacuum distillation system allows for washing
in the same machine all kinds of articles
regardless of their composition or origin
(personal clothing, workwear, carpets, leather
garments, etc.).



Design



Durability



Environment



Security &
Comfort



Energy
efficiency



Cleaning
results





Equipment JUNIOR HCM

Stainless
STEEL

Computer
TC

UNI
DRY

UNI
COOLER

UNI
SAFE

UNI
STILL



- Stainless steel
- Computer TC
- Soap injector pump
- Frequency inverter
- UNIDRY
- UNICOOLER
- UNISTILL
- UNIFOAM
- Overfill preventer for the still
- Self cleaning still
- Still sludge pump + barrel for residues
- Water separator
- Decanter (2nd water separator)
- UNISAFE
- Pneumatic door blocking
- Solvent safety tray

Model JUNIOR HCM

JUNIOR HCM models can be customized according to design, capacity, number of tanks and types of filters

	HCM162A	HCM202	HCM203	HCM262	HCM263	HCM322A	HCM322	HCM323	HCM382	HCM383	HCM523	HCM643	HCM803
Capacity	8	10	10	13	13	16	16	16	19	19	26	32	40
Drum volume (liters)	160	204	204	260	260	318	318	318	380	380	520	643	803
Tanks	2	2	3	2	3	2	2	3	2	3	3	3	3
2 Ecological filters			•		•			•		•	•	•	•
1 Ecological filter	•	•		•		•	•		•				
1 Decolourant filter		•		•		•	•		•				
Design	SLIM	CROSS	CROSS	CROSS	CROSS	SLIM	CROSS	CROSS	CROSS	CROSS	CROSS	CROSS	CROSS

(•) Standard



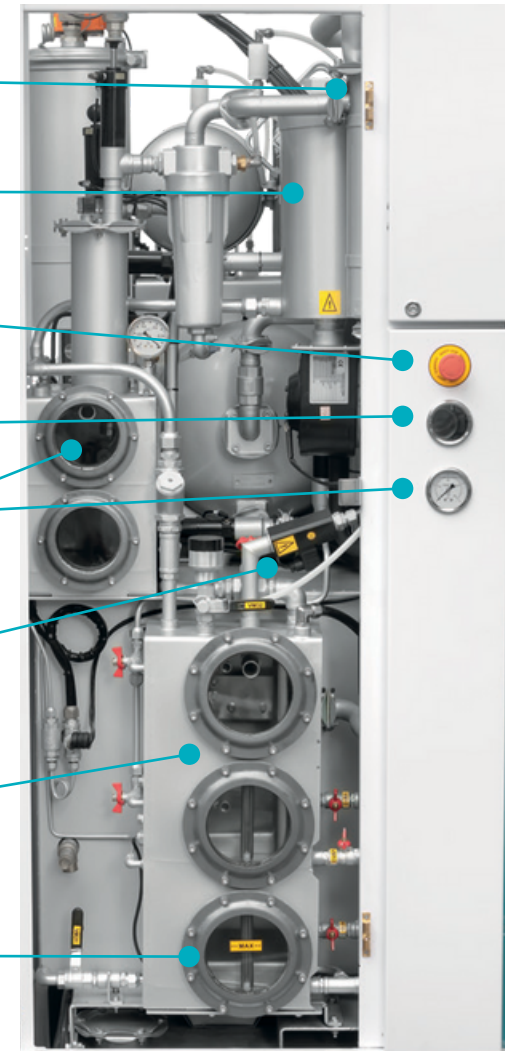
Components HCM

All the components of the **UNISEC** machines are from brands of high technological level and with the highest standards of quality, safety and reliability.

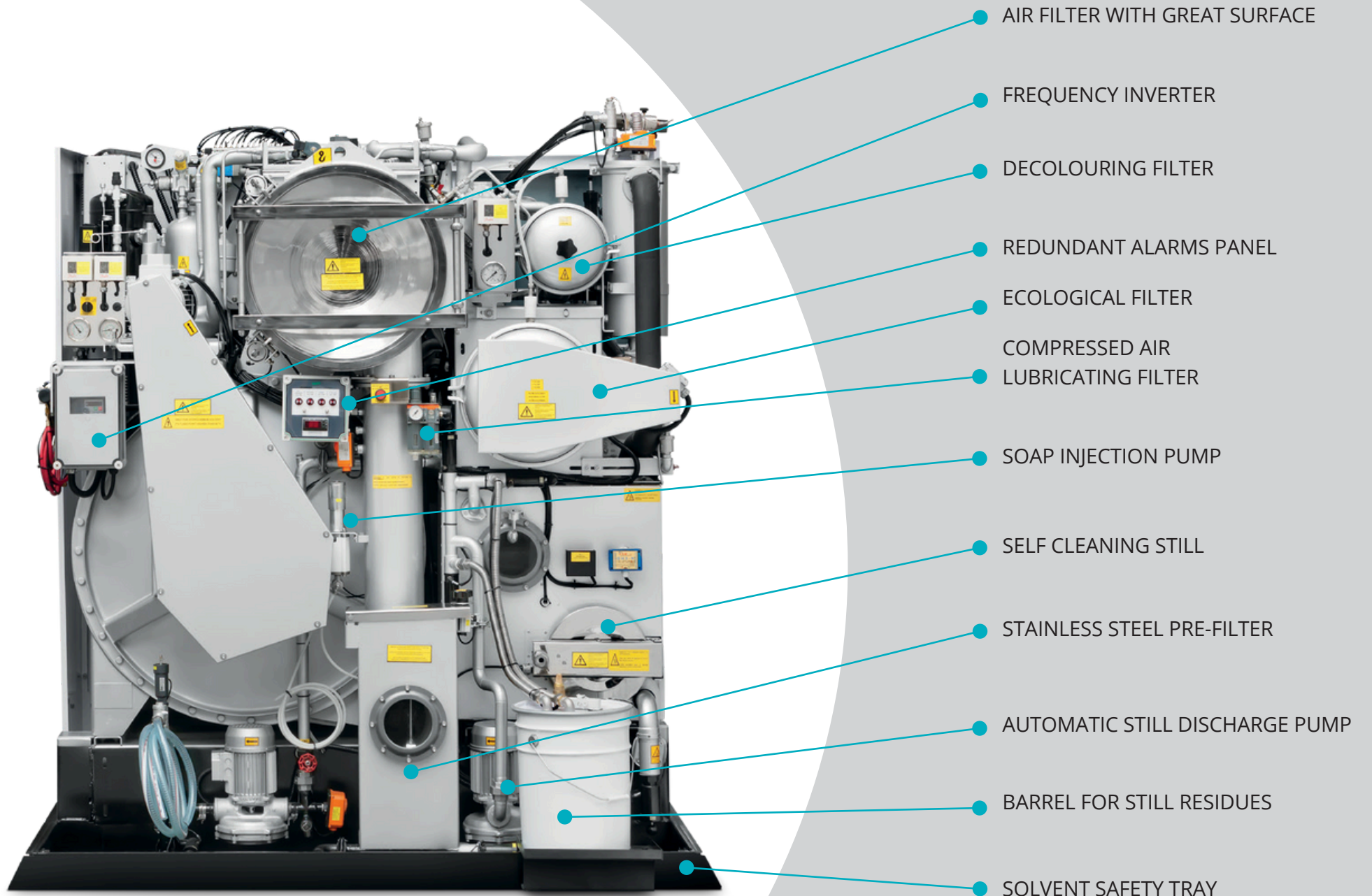


**MODEL JUNIOR HCM162A
(SLIM version)**

- UNICOOLER (solvent cooler)
- ACTIVATED CARBON TANK
- EMERGENCY PUSH BUTTON
- SOLVENT PASS-THROUGH SIGHT GLASS
- FILTER PRESSURE GAUGE
- PRE-SEPARATOR
- AUTOMATIC DRYING CONTROL
- CONTACT WATER SEPARATOR
- DECANTER (second separator)



**Front view
(CROSS version)**



**Back view
(CROSS version)**

AIR FILTER WITH GREAT SURFACE

FREQUENCY INVERTER

DECOLOURING FILTER

REDUNDANT ALARMS PANEL

ECOLOGICAL FILTER

COMPRESSED AIR
LUBRICATING FILTER

SOAP INJECTION PUMP

SELF CLEANING STILL

STAINLESS STEEL PRE-FILTER

AUTOMATIC STILL DISCHARGE PUMP

BARREL FOR STILL RESIDUES

SOLVENT SAFETY TRAY

making the difference !

Quality and service worldwide

Qualità e servizio in tutto il mondo
Calidad y servicio en todo el mundo
Qualitat und service auf der ganze welt
Qualité et service partout dans le monde

UNISEC

Dry cleaning & Laundry solutions

Central Asia

23, Shunping auxiliary Road,
Shunyi District, Beijing, China
Tel: +86 10-139-1099-3316
Sales Tel: +46 723 733 790
Email: unisec@bjunisec.com

Europe

C/ Can Mitjans, nave 29
Polígono Industrial Polizur
08290 Cerdanyola del Vallès
(Barcelona) SPAIN
Tel: +34 935 805 344
Email: info@unisec.net



Follow us on:



@unisec_Manufacturer

